

Feb. 20-1890

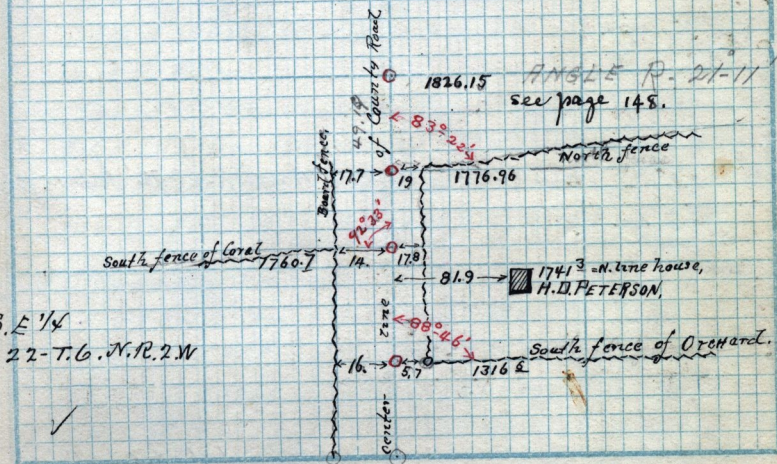
Notes of County Road at West Weber.

see page 50

158° 10' (Angle  $\angle 21^{\circ} 30'$ )

1760.7  
17.2  
1741.5

m. S. E 1/4  
See 22-T.6. N. R. 2 W



Scale: ..... Chains per inch.

{ Al. Postan }  
{ Ed. Wheeler } chainmen

W. W. Child  
Selectman